

FALL GATHERING

BCM's Semester Retreat

This packet will give you some information about BCM's upcoming fall retreat in Lynchburg, VA. Join the BCM community for a restorative weekend in Virginia's beautiful mountains.

"Unsteady"// Theme

The rain came down, the streams rose, and the winds blew and beat against that house; yet it did not fall, because it had its foundation on rock. (Matthew 7:25)

What to Bring

- Comfortable clothes and walking shoes (bring layers)
- Sleeping bag or sheets and a blanket
- Towel
- Bible, notebook, pen/pencil
- Shower Shoes
- Personal items
- Board games/cards
- Water Bottle
- Toothbrush and toothpaste (dental hygiene is the most important hygiene!)



Kairos Initiative will hold its fourth annual Fall Gathering on October 28 through October 30 at Eagle Eyrie Conference Center. On the final weekend in October, young adults across the commonwealth are invited to gather in the mountains outside of Lynchburg to explore community, discipleship and mission together.

The weekend will feature keynote speaker Cesar Sotomayor, an international church planter who has worked in Europe to help create local communities of faith and support refugees. Matt O'Lear and Revive Worship will be leading music. Cesar and Matt will be leading the main Worship Gatherings, but there are also many other activities to take part in. On Saturday, during the day, there are many different breakout sessions you can choose to attend. Other fun things include a volleyball tournament, hiking the mountain (Neature Walks, y'all!), and hanging out!



Quick Facts

Location: Eagle Eyrie Baptist Conference Center, situated on Locke Mountain, eleven miles northwest of downtown Lynchburg, VA. (Address: 1 Eagle Eyrie Drive, Lynchburg, Virginia; website: <http://eagleeyrie.org/>)

Speaker: Cesar Sotomayor

Cost: \$75 (Includes 2 nights' lodging, dinner on Friday, all meals on Saturday)



Campus Information & Policies

Lodging: We will be staying at the PAL (Peninsula Baptist Association Lodge). It is heated/air conditioned and has beds, a kitchen, and a common area (see the next page). We recommend bringing a pillow and either a sleeping bag or sheets/a blanket.

Food Service: Eagle Eyrie offers delicious buffet-style meals in their Dining Hall, with a maximum seating capacity of 500. All meals include Pepsi products, milk, coffee, tea and juice. Lunch and supper meals include soup, salad, baked potato and dessert bars! All breakfasts will be had at the PAL Lodge, where we will be staying.

Quiet Hours: Quiet hours are observed from 12:00 midnight-6:00am. Groups are expected to observe the rights of others to peace and quiet during these hours.

Alcohol, Drugs, & Smoking: The use of alcohol, illegal drugs, and smoking is prohibited while on Eagle Eyrie grounds.

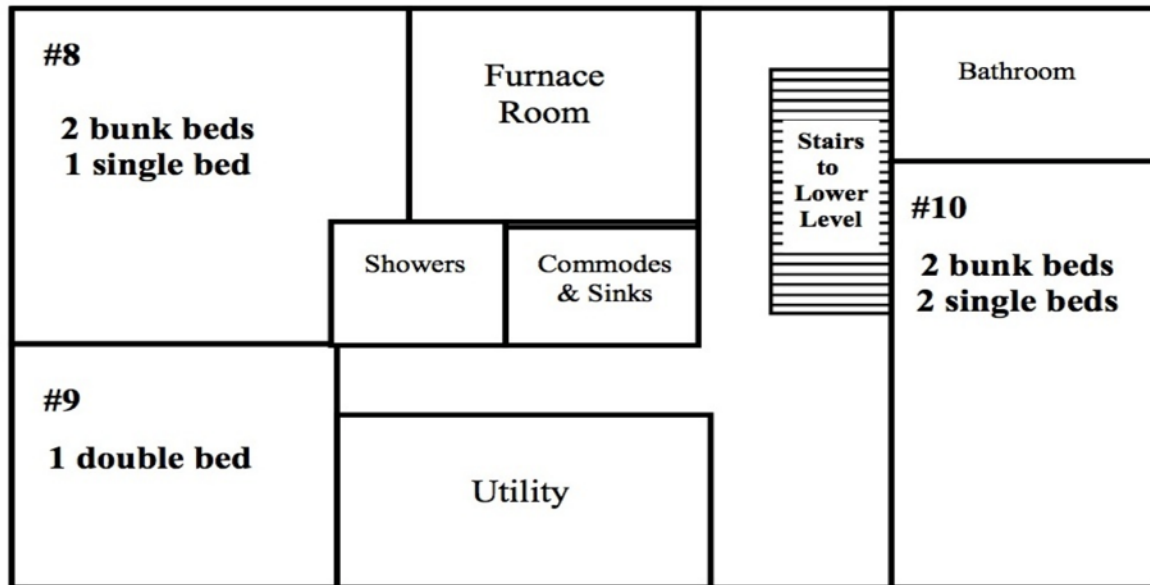
Wi-Fi Access: Wireless Internet is open and available in the Voight Conference Center, Dogwood Hall, Hoover Center and the Cedar Crest Hotel. Depending on terrain and signal strength, Wi-Fi may be able to be picked up in other places on campus as well.

Cellphone Services: Depends where you are on campus – the higher lodges have a tougher time connecting. The bulk of the common areas around the hotels, Dogwood, and the dining halls usually have cell phone access.



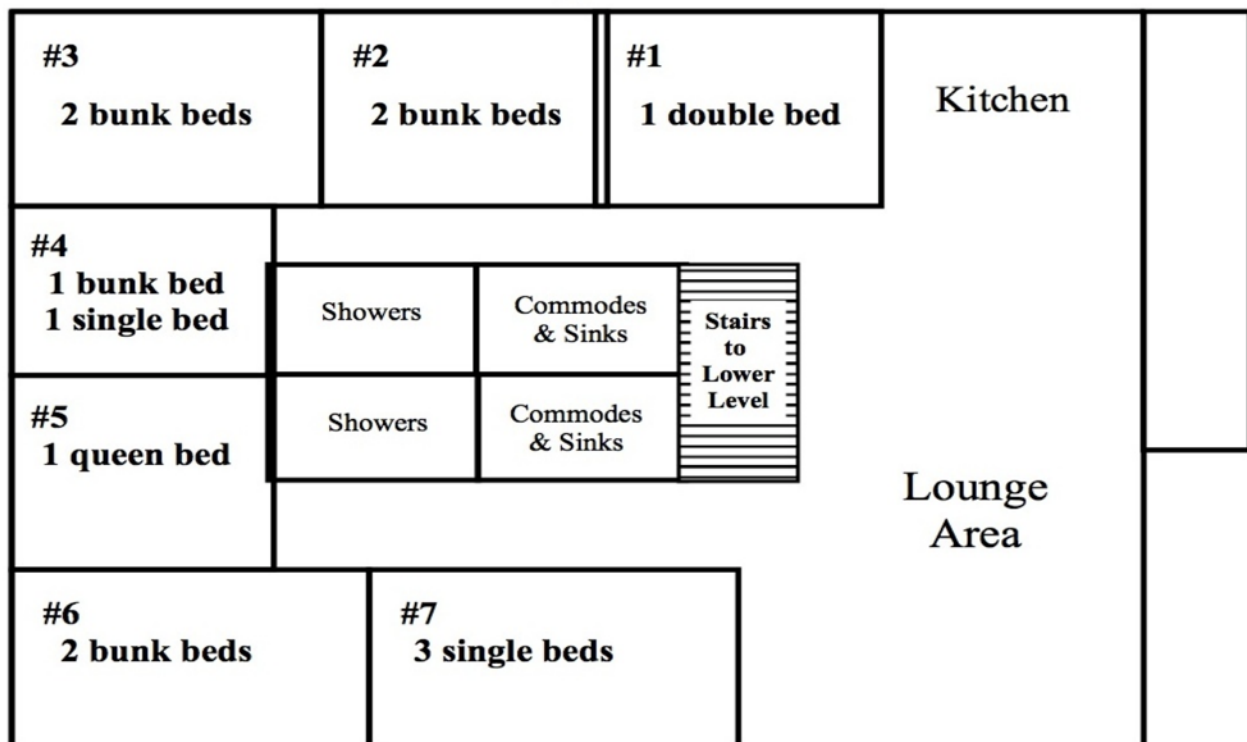
Peninsula (PAL) Lodge
Capacity = 35

Lower Level



Peninsula (PAL) Lodge
Capacity = 35

Upper Level



Weekend Schedule

worship. teaching. community.

Friday

6:00pm	Check-In Begins
8:00pm	Worship Gathering I
9:30pm	Dismissal

Saturday

7:30am	Leadership Breakfast for Kairos ministers & program leaders
9:00am	Worship Gathering II
10:30am	Breakout Session I
11:30am	Breakout Session II
12:30pm	Lunch
1:00-5:00pm	Free Time (Various activities provided)
5:00pm	Breakout Session III
6:00pm	Dinner
7:15pm	Worship Gathering III
9:00pm	Church/Campus Group Time
10:30pm	Evening Social

Sunday

9:00am:	Worship Gathering IV
10:45am:	Dismissal

Event schedule subject to change

Campus Map

